

# Biotinylated Human ACE2/ACEH Protein

Cat. No. ACE-HM501B

## Description

|                         |  |
|-------------------------|--|
| <b>Source</b>           | Recombinant Biotinylated Human ACE2/ACEH Protein is expressed from HEK293 with hFc tag and Avi tag at the C-Terminus.<br>It contains Gln18-Ser740. |
| <b>Accession</b>        | Q9BYF1-1   |
| <b>Molecular Weight</b> | The protein has a predicted MW of 111.2 kDa. Due to glycosylation, the protein migrates to 115-125 kDa based on Tris-Bis PAGE result.              |
| <b>Endotoxin</b>        | Less than 1EU per µg by the LAL method.  |
| <b>Purity</b>           | > 95% as determined by Tris-Bis PAGE   |

## Formulation and Storage

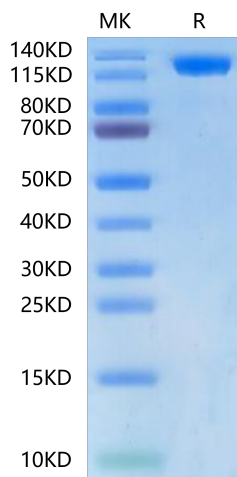
|                       |   |
|-----------------------|---|
| <b>Formulation</b>    | Lyophilized from 0.22µm filtered solution in PBS (pH 7.4). Normally 8% trehalose is added as protectant before lyophilization.  |
| <b>Reconstitution</b> | Centrifuge the tube before opening. Reconstituting to a concentration more than 100 µg/ml is recommended. Dissolve the lyophilized protein in distilled water.  |
| <b>Storage</b>        | -20 to -80°C for 12 months as supplied from date of receipt. -20 to -80°C for 3-6 months in unopened state after reconstitution. 2-8°C for 2-7 days after reconstitution. Recommend to aliquot the protein into smaller quantities for optimal storage. Please minimize freeze-thaw cycles. |

## Background

ACE2 (Angiotensin I Converting Enzyme 2) is a Protein Coding gene. Diseases associated with ACE2 include Severe Acute Respiratory Syndrome and Neurogenic Hypertension. The protein encoded by this gene belongs to the angiotensin-converting enzyme family of dipeptidyl carboxypeptidases and has considerable homology to human angiotensin 1 converting enzyme. This secreted protein catalyzes the cleavage of angiotensin I into angiotensin 1-9, and angiotensin II into the vasodilator angiotensin 1-7.

## Assay Data

### Tris-Bis PAGE



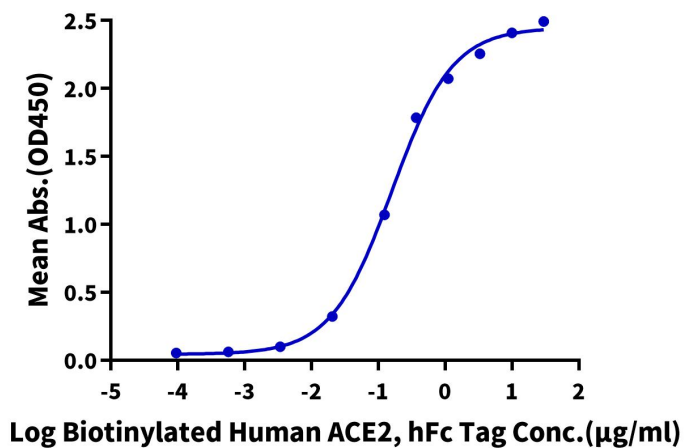
Biotinylated Human ACE2 on Tris-Bis PAGE under reduced condition. The purity is greater than 95%.

### ELISA Data

Assay Data

**Biotinylated Human ACE2, hFc Tag ELISA**

0.2µg SARS-COV-2 Spike S, hFc Tag Per Well



Immobilized SARS-COV-2 Spike S, hFc Tag at 2µg/ml (100µl/well) on the plate. Dose response curve for Biotinylated Human ACE2, hFc Tag with the EC50 of 0.16µg/ml determined by ELISA.